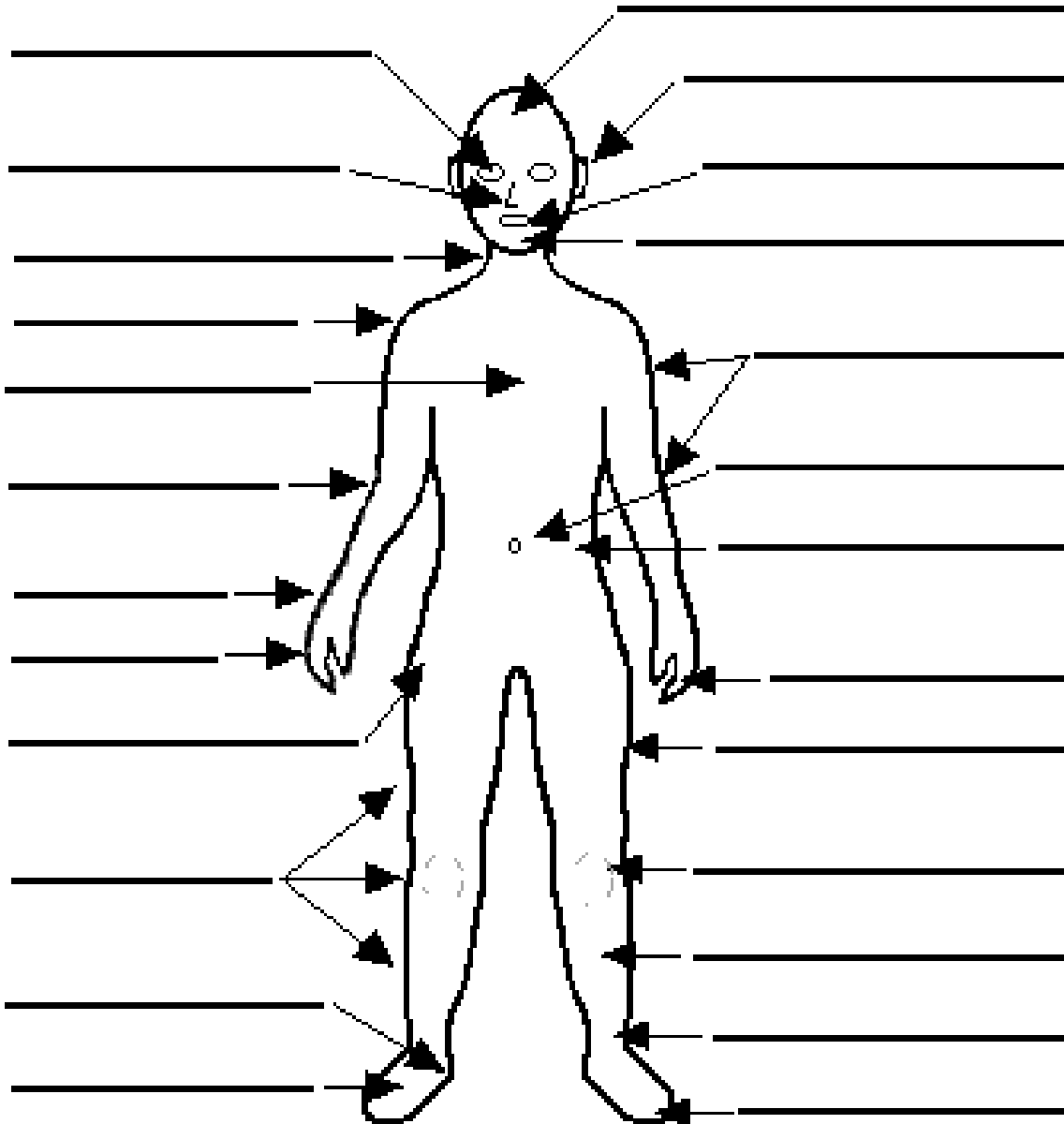


**PARTS OF THE BODY – Vocabulary acquisition**

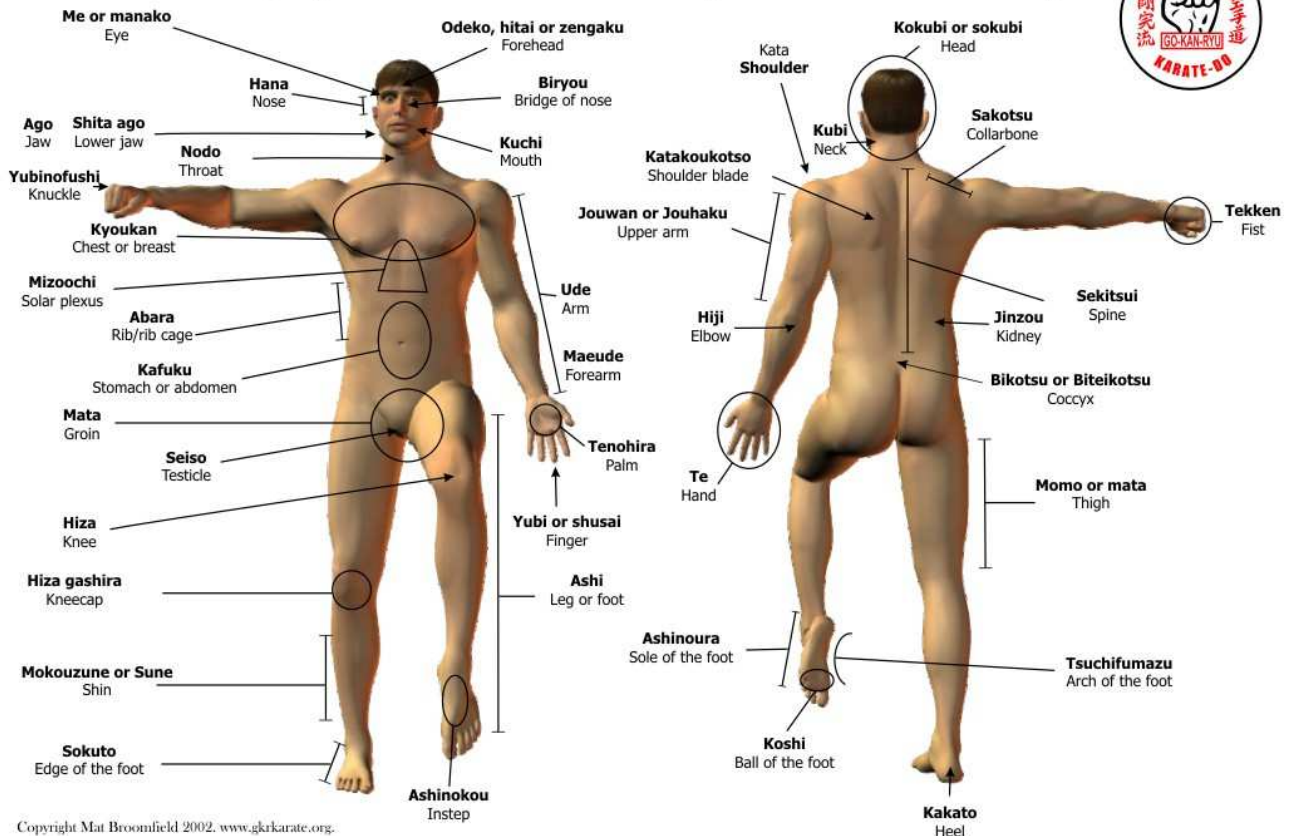
1- Label the human body diagram with the words below (without looking at the diagrams on the next page)

ankle	ear	hand	leg	shoulder
arm	elbow	head	mouth	thigh
belly button	eye	heel	nose	toes
chest	fingers	hip	neck	waist
chin	foot	knee	shin	wrist



2- Make a list of all the (English) words from the diagram below which are not in the diagram above

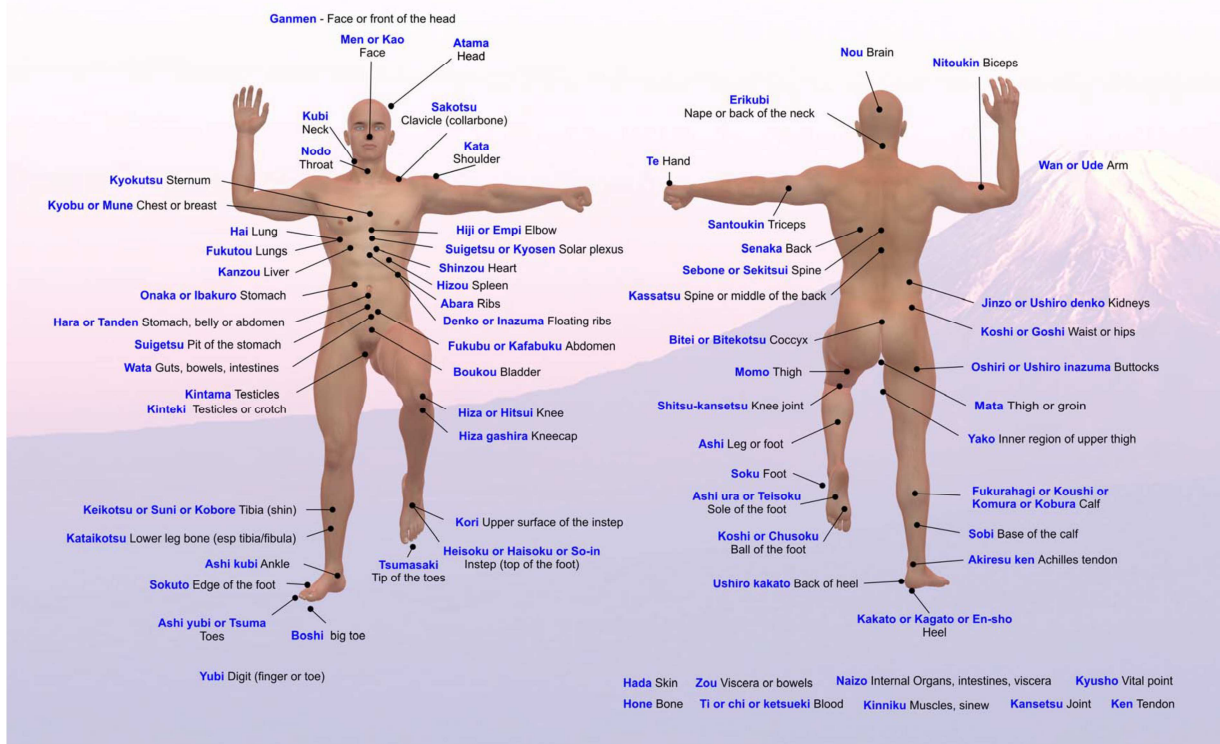
## Japanese names for parts of the body



Copyright Mat Broomfield 2002. www.gkkarate.org.

3- Same exercise as 2 with the diagram below

## Japanese Names for parts of the Body



Hada Skin    Zou Viscera or bowels    Naizo Internal Organs, intestines, viscera    Kyusho Vital point  
Hone Bone    Ti or chi or ketsueki Blood    Kinniku Muscles, sinew    Kansetsu Joint    Ken Tendon